

Nutrition Facts	
Serving Size 1 patty (149g / 5.30oz)	
Servings per Container: 40	
Amount per serving	
Calories 890	Calories from Fat 270
% Daily Value	
Total Fat 30g	46%
Saturated Fat 12g	61%
Trans Fat 2g	
Cholesterol 100mg	34%
Sodium 85mg	3%
Total Carbohydrate 0g	0%
Dietary Fiber 0g	0%
Sugars 0g	
Protein 27g	
Vitamin A 0%	Vitamin C 0%
Calcium 2%	Iron 15%

\*Percent Daily Values are based on a 2,000 calorie diet.

**KEEP REFRIGERATED 28-34°F**  
**1855 Black Angus Ground Beef**



**Steakburger**  
**3/1 THICK**



Production Date  
**10 22 24**

**USDA Choice or Higher**

Use by:  
**11/14/24**

**NET WT. 13.3 LBS. Unknown 18763155**

**EST. 2574B**



MFG. BY: WOLVERINE PACKING CO., DETROIT, MI 48207 (01) 0 0076176 76388 9 (11) 241022 (3201) 000133 (21) 0104626

Nutrition Facts	
Serving Size 1 patty (224g / 8oz)	
Servings per Container: 48	
Amount per serving	
Calories 890	Calories from Fat 410
% Daily Value	
Total Fat 45g	89%
Saturated Fat 18g	92%
Trans Fat 3g	
Cholesterol 155mg	51%
Sodium 125mg	5%
Total Carbohydrate 0g	0%
Dietary Fiber 0g	0%
Sugars 0g	
Protein 41g	
Vitamin A 0%	Vitamin C 0%
Calcium 23%	Iron 25%

\*Percent Daily Values are based on a 2,000 calorie diet.

**KEEP REFRIGERATED 28-34°F**  
**1855 Black Angus Ground Beef**



**Steakburger**  
**8 oz PUCK**



Production Date  
**10 22 24**

**USDA Choice or Higher**

Use by:  
**11/14/24**

**NET WT. 24 LBS. Unknown 18758855**

**EST. 2574B**



MFG. BY: WOLVERINE PACKING CO., DETROIT, MI 48207 (01) 0 0076176 75896 0 (11) 241022 (3201) 000240 (21) 0104625

**KEEP REFRIGERATED 28 – 34°F**

**57763150**

**GROUND BEEF PATTIES**  
**CAB STEAKBURGER**

**3/1 THICK**



**NET WT 13.3 LB (6.03kg)**

MFG. BY: WOLVERINE PACKING CO., DETROIT, MI 48207

EST. 2574B Production Date: 10 22 24 (01)

Use by:  
**11/14/24**

**Unknown, CABX – 2**



(01) 0 0076176 76557 9 (11) 241022 (3201) 000133 (21) 0164809

Nutrition Facts	
Serving Size 1 patty (112g / 4oz)	
Servings per Container: 66	
Amount per serving	
Calories 290	Calories from Fat 200
% Daily Value	
Total Fat 23g	35%
Saturated Fat 9g	46%
Trans Fat 2g	
Cholesterol 75mg	26%
Sodium 80mg	3%
Total Carbohydrate 0g	0%
Dietary Fiber 0g	0%
Sugars 0g	
Protein 21g	
Vitamin A 5%	Vitamin C 0%
Calcium 2%	Iron 10%
*Percent Daily Values are based on a 2,000 calorie diet.	

KEEP REFRIGERATED 28-34°F

# 1855 Black Angus Ground Beef

## Steakburger 4/1 THICK

USDA Choice or Higher

NET WT. 14 LBS.      Unknown      **18764155**



Production Date  
**10 22 24**

Use by:  
**11/14/24**

EST. 2574B



MFG. BY: WOLVERINE PACKING CO., DETROIT, MI 48207 (01) 0 0076176 76537 1 (11) 241022 (3201) 000140 (21) 0104627

KEEP REFRIGERATED 28 – 34°F

# 71757820

## GROUND BEEF PATTIES

24 – 8 oz PUCKIE

NET WT 12 LB (5.44kg)

MFG. BY: WOLVERINE PACKING CO., DETROIT, MI 48207

EST. 2574B Production Date: 10 22 24 (01)

Use by:  
**11/14/24**

Unknown, X-2



(01) 0 0076176 75797 0 (11) 241022 (3201) 000120 (21) 0164810

KEEP REFRIGERATED 28 – 34°F

# 81730700

## GROUND BEEF PATTIES ANGUS STEAKBURGER

7 oz THICK

NET WT 14 LB (6.35kg)

MFG. BY: WOLVERINE PACKING CO., DETROIT, MI 48207

EST. 2574B Production Date: 10 22 24 (01)

Use by:  
**11/14/24**

Unknown, X-2



(01) 0 0076176 73582 4 (11) 241022 (3201) 000140 (21) 0164811



**KEEP FROZEN**

**780021**

**GROUND BEEF  
VALUE GRIND**



Production Date: 10 22 24 (01)



(01) 0 0076176 78002 2 (11) 241022 (3201) 000160 (21) 0187907

Unknown, 4M1

DIST. BY: WOLVERINE PACKING CO.,  
DETROIT MI 48207

**32/8oz**

**KEEP REFRIGERAT**

**KEEP REFRIGERATED 28-34°F**

**GROUND BEEF PATTIES THIC  
ANGUS STEAKBURGER 80% LE**

**GROUND BEEF PATTIES THICK  
ANGUS STEAKBURGER 80% LEAN / 20% FAT**

**0445520**

**0445520**

**NET WT 16 LB (7.26kg)**



00734730289175

Use by:

**11/14/24**

Production Date: 10 22 24

**EST. 2574B**



(01) 0 07347

DIST. BY: Sysco Corporation, Houston , Texas 77077-2099

**32/8oz**

**KEEP REFRIGERAT**

**KEEP REFRIGERATED 28-34°F**

**USDA PRIME**

**GROUND BEEF PATTY THICK  
CHUCK**

**USDA PRIME**

**GROUND BEEF PATTY THICK  
CHUCK**

**0796355**

**0796355**

**NET WT 16 LB (7.26kg)**



00734730310794

Use by:

**11/14/24**

Production Date: 10 22 24

**EST. 2574B**



(01) 0 07347

DIST. BY: Sysco Corporation, Houston , Texas 77077-2099

KEEP REFRIGERATED 28 – 34°F

99730050

GROUND BEEF  
CAB STEAKBURGER

Bulk

NET WT 20 LB (9.07kg)

MFG. BY: WOLVERINE PACKING CO., DETROIT, MI 48207

EST. 2574B Production Date: 10 22 24 (01)

Use by:

11/14/24

Unknown, CABX-2



(01) 0 0076176 93005 2 (11) 241022 (3201) 000200 (21) 0164815

KEEP REFRIGERATED 28 – 34°F

99730014

USDA PRIME  
GROUND BEEF  
PRIME CAB CHUCK

Bulk

NET WT 20 LB (9.07kg)

MFG. BY: WOLVERINE PACKING CO., DETROIT, MI 48207

EST. 2574B Production Date: 10 22 24 (01)

Use by:

11/14/24

Unknown, CABX-2



(01) 0 0076176 73007 2 (11) 241022 (3201) 000200 (21) 0164814

KEEP REFRIGERATED 28 – 34°F

99718354

GROUND BEEF PATTIES  
CAB

3.3 oz PUCK

NET WT 13.20 LB (5.99kg)

MFG. BY: WOLVERINE PACKING CO., DETROIT, MI 48207

EST. 2574B Production Date: 10 22 24 (01)

Use by:

11/14/24

Unknown, CABX-2



(01) 0 0076176 71845 2 (11) 241022 (3201) 000132 (21) 0164813



KEEP REFRIGERATED 28 – 34°F

99718310

GROUND BEEF PATTIES

3.3 oz PUCK

NET WT 13.20 LB (5.99kg)

MFG. BY: WOLVERINE PACKING CO., DETROIT, MI 48207

EST. 2574B Production Date: 10 22 24 (01)

Use by:

11/14/24

Unknown, X-2



(01) 0 0076176 71835 3 (11) 241022 (3201) 000132 (21) 0164812

KEEP FROZEN



3.5 oz

GROUND BEEF PATTIES



(01) 0 0076176 75517 4 (11) 241022 (3201) 000140 (21) 0169780

95755121

KEEP FROZEN

GROUND BEEF PATTIES

3.5 oz

NET WT 14 LB (6.35kg)

MFG. BY: WOLVERINE PACKING CO., DETROIT, MI 48207

EST. 2574B Production Date: 10 22 24 (01)



Unknown, X-2 Bulk 12:10

(01) 0 0076

KEEP REFRIGERATED 28-34°F



3.5 oz

GROUND BEEF PATTIES



(01) 0 0076176 75512 9 (11) 241022 (3201) 000140 (21) 0169779

95755120

KEEP REFRIGERATED 28-34°F

GROUND BEEF PATTIES

3.5 oz

NET WT 14 LB (6.35kg)

MFG. BY: WOLVERINE PACKING CO., DETROIT, MI 48207

EST. 2574B Production Date: 10 22 24 (01)



Use by:

11/14/24

Unknown, X-2

12:10

(01) 0 0076

**2/5 lb**

**KEEP REFRIGERAT**

**KEEP REFRIGERATED 28-34°F**

**GROUND BEEF BULK  
80% LEAN / 20% FAT**

**GROUND BEEF BULK  
80% LEAN / 20% FAT**

**0593099**

**0593099**

**NET WT 10 LB (4.54kg)**



00734730298375

Use by:

**11/14/24**

Production Date: 10 22 24

**EST. 2574B**



(01) 0 07347

DIST. BY: Sysco Corporation, Houston, Texas 77077-2099

**KEEP REFRIGERATED 28 – 34°F  
USDA PRIME  
GROUND BEEF PATTIES  
CHUCK**

**99730112**

**10 oz THICK**



**NET WT 15 LB (6.80kg)**

**MFG. BY: WOLVERINE PACKING CO., DETROIT, MI 48207**

**EST. 2574B Production Date: 10 22 24 (01)**

Use by:

**11/14/24**

**Unknown, X-2**



(01) 0 0076176 74011 8 (11) 241022 (3201) 000150 (21) 0164817

**KEEP REFRIGERATED 28 – 34°F**

**99730060**

**GROUND BEEF**



**Bulk**

**NET WT 20 LB (9.07kg)**

**MFG. BY: WOLVERINE PACKING CO., DETROIT, MI 48207**

**EST. 2574B Production Date: 10 22 24 (01)**

Use by:

**11/14/24**

**Unknown, X-2**



(01) 0 0076176 73006 5 (11) 241022 (3201) 000200 (21) 0164816



KEEP REFRIGERATED 28 – 34°F

99730600

GROUND BEEF PATTIES  
ANGUS STEAKBURGER



6 oz WIDE

NET WT 15 LB (6.80kg)

MFG. BY: WOLVERINE PACKING CO., DETROIT MI 48207

EST. 2574B Production Date: 10 22 24 (01)

Use by:  
11/14/24

Unknown, X-2



(01) 0 0076176 73060 7 (11) 241022 (3201) 000150 (21) 0164818

KEEP REFRIGERATED 28 – 34°F

99730620

GROUND BEEF PATTIES



40 – 6 oz WIDE

NET WT 15 LB (6.80kg)

MFG. BY: WOLVERINE PACKING CO., DETROIT MI 48207

EST. 2574B Production Date: 10 22 24 (01)

Use by:  
11/14/24

Unknown, X-2



(01) 0 0076176 77062 7 (11) 241022 (3201) 000150 (21) 0164819

KEEP REFRIGERATED 28 – 34°F

99730670

GROUND BEEF PATTIES  
STEAKBURGER



6 oz WIDE

NET WT 15 LB (6.80kg)

MFG. BY: WOLVERINE PACKING CO., DETROIT MI 48207

EST. 2574B Production Date: 10 22 24 (01)

Use by:  
11/14/24

Unknown, X-2



(01) 0 0076176 73087 4 (11) 241022 (3201) 000150 (21) 0164820

KEEP REFRIGERATED 28 – 34°F  
USDA PRIME  
GROUND BEEF PATTIES  
CHUCK

99730712

7 oz THICK



NET WT 14 LB (6.35kg)

MFG. BY: WOLVERINE PACKING CO., DETROIT, MI 48207

EST. 2574B Production Date: 10 22 24 (01)

Use by:  
11/14/24

Unknown, X-2



(01) 0 0076176 63071 6 (11) 241022 (3201) 000140 (21) 0164821

KEEP REFRIGERATED 28 – 34°F  
USDA PRIME  
GROUND BEEF PATTIES  
PRIME CAB CHUCK

99730714

7 oz THICK



NET WT 14 LB (6.35kg)

MFG. BY: WOLVERINE PACKING CO., DETROIT, MI 48207

EST. 2574B Production Date: 10 22 24 (01)

Use by:  
11/14/24

Unknown, CABX-2



(01) 0 0076176 73077 5 (11) 241022 (3201) 000140 (21) 0164822

KEEP REFRIGERATED 28 – 34°F  
GROUND BEEF PATTIES  
ANGUS CHUCK

99730780

7 oz THICK



NET WT 14 LB (6.35kg)

MFG. BY: WOLVERINE PACKING CO., DETROIT, MI 48207

EST. 2574B Production Date: 10 22 24 (01)

Use by:  
11/14/24

Unknown, X-2



(01) 0 0076176 73078 2 (11) 241022 (3201) 000140 (21) 0164823



KEEP REFRIGERATED 28 – 34°F

99732100

GROUND BEEF PATTIES  
ANGUS STEAKBURGER



2/1 WIDE

NET WT 16 LB (7.26kg)

MFG. BY: WOLVERINE PACKING CO., DETROIT, MI 48207

EST. 2574B Production Date: 10 22 24 (01)

Use by:

11/14/24

Unknown, X-2



(01) 0 0076176 73210 6 (11) 241022 (3201) 000160 (21) 0164824

KEEP REFRIGERATED 28 – 34°F

99732110

GROUND BEEF PATTIES



2/1 WIDE

NET WT 16 LB (7.26kg)

MFG. BY: WOLVERINE PACKING CO., DETROIT, MI 48207

EST. 2574B Production Date: 10 22 24 (01)

Use by:

11/14/24

Unknown, X-2



(01) 0 0076176 73211 3 (11) 241022 (3201) 000160 (21) 0164825

KEEP REFRIGERATED 28 – 34°F

99732115

CUSTOM BLEND  
GROUND BEEF PATTIES  
ANGUS CHUCK



CB

2:1 WIDE

NET WT 16 LB (7.26kg)

MFG. BY: WOLVERINE PACKING CO., DETROIT, MI 48207

EST. 2574B Production Date: 10 22 24 (01)

Use by:

11/14/24

Unknown, X-2



(01) 0 0076176 73220 5 (11) 241022 (3201) 000160 (21) 0164826

KEEP REFRIGERATED 28 – 34°F

99732120

GROUND BEEF PATTIES



2/1 WIDE

NET WT 16 LB (7.26kg)

MFG. BY: WOLVERINE PACKING CO., DETROIT MI 48207

EST. 2574B Production Date: 10 22 24 (01)

Use by: 11/14/24

Unknown, X-2



(01) 0 0076176 73212 0 (11) 241022 (3201) 000160 (21) 0164827

KEEP REFRIGERATED 28 – 34°F

99732180

GROUND BEEF PATTIES  
ANGUS CHUCK



2/1 WIDE

NET WT 16 LB (7.26kg)

MFG. BY: WOLVERINE PACKING CO., DETROIT MI 48207

EST. 2574B Production Date: 10 22 24 (01)

Use by: 11/14/24

Unknown, X-2



(01) 0 0076176 73218 2 (11) 241022 (3201) 000160 (21) 0164828

KEEP REFRIGERATED 28 – 34°F

99733100

GROUND BEEF PATTIES  
ANGUS STEAKBURGER



3/1 WIDE

NET WT 16 LB (7.26kg)

MFG. BY: WOLVERINE PACKING CO., DETROIT MI 48207

EST. 2574B Production Date: 10 22 24 (01)

Use by: 11/14/24

Unknown, X-2



(01) 0 0076176 73322 6 (11) 241022 (3201) 000160 (21) 0164829



KEEP REFRIGERATED 28 – 34°F

99733120

GROUND BEEF PATTIES



3/1 WIDE

NET WT 16 LB (7.26kg)

MFG. BY: WOLVERINE PACKING CO., DETROIT, MI 48207

EST. 2574B Production Date: 10 22 24 (01)

Use by:

11/14/24

Unknown, X-2



(01) 0 0076176 73312 7 (11) 241022 (3201) 000160 (21) 0164830

KEEP REFRIGERATED 28 – 34°F

99733700

GROUND BEEF PATTIES  
ANGUS STEAKBURGER



7 oz WIDE

NET WT 17.5 LB (7.94kg)

MFG. BY: WOLVERINE PACKING CO., DETROIT, MI 48207

EST. 2574B Production Date: 10 22 24 (01)

Use by:

11/14/24

Unknown, X-2



(01) 0 0076176 83375 9 (11) 241022 (3201) 000175 (21) 0164831

KEEP REFRIGERATED 28 – 34°F

99733720

GROUND BEEF PATTIES



7 oz WIDE

NET WT 17.50 LB (7.94kg)

MFG. BY: WOLVERINE PACKING CO., DETROIT, MI 48207

EST. 2574B Production Date: 10 22 24 (01)

Use by:

11/14/24

Unknown, X-2



(01) 0 0076176 83372 8 (11) 241022 (3201) 000175 (21) 0164832

KEEP REFRIGERATED 28 – 34°F

99733754

GROUND BEEF PATTIES  
CAB STEAKBURGER

7 oz WIDE

NET WT 17.5 LB (7.94kg)

MFG. BY: WOLVERINE PACKING CO., DETROIT, MI 48207

EST. 2574B Production Date: 10 22 24 (01)

Use by:

11/14/24

Unknown, CABX-2



(01) 0 0076176 73447 6 (11) 241022 (3201) 000175 (21) 0164833

KEEP REFRIGERATED 28 – 34°F

99734170

GROUND BEEF PATTIES  
STEAKBURGER

4/1 WIDE

NET WT 16 LB (7.26kg)

MFG. BY: WOLVERINE PACKING CO., DETROIT, MI 48207

EST. 2574B Production Date: 10 22 24 (01)

Use by:

11/14/24

Unknown, X-2



(01) 0 0076176 73429 2 (11) 241022 (3201) 000160 (21) 0164834

KEEP REFRIGERATED 28 – 34°F

99735100

GROUND BEEF PATTIES  
ANGUS STEAKBURGER

3.2 oz

NET WT 12.8 LB (5.81kg)

MFG. BY: WOLVERINE PACKING CO., DETROIT, MI 48207

EST. 2574B Production Date: 10 22 24 (01)

Use by:

11/14/24

Unknown, X-2



(01) 0 0076176 73510 7 (11) 241022 (3201) 000128 (21) 0164835



KEEP REFRIGERATED 28 – 34°F

99735120

GROUND BEEF PATTIES

5/1

NET WT 12.8 LB (5.81kg)

MFG. BY: WOLVERINE PACKING CO., DETROIT, MI 48207

EST. 2574B Production Date: 10 22 24 (01)

Use by:

11/14/24

Unknown, X-2



(01) 0 0076176 93512 5 (11) 241022 (3201) 000128 (21) 0164836

KEEP REFRIGERATED 28 – 34°F

99736120

GROUND BEEF PATTIES

6/1

NET WT 13.3 LB (6.03kg)

MFG. BY: WOLVERINE PACKING CO., DETROIT, MI 48207

EST. 2574B Production Date: 10 22 24 (01)

Use by:

11/14/24

Unknown, X-2



(01) 0 0076176 73612 8 (11) 241022 (3201) 000133 (21) 0164837

KEEP REFRIGERATED 28 – 34°F

99736610

GROUND BEEF PATTIES

6 oz THICK

NET WT 12 LB (5.44kg)

MFG. BY: WOLVERINE PACKING CO., DETROIT, MI 48207

EST. 2574B Production Date: 10 22 24 (01)

Use by:

11/14/24

Unknown, X-2



(01) 0 0076176 73663 0 (11) 241022 (3201) 000120 (21) 0164838

KEEP REFRIGERATED 28 – 34°F

99736650

GROUND BEEF PATTIES  
CAB STEAKBURGER

6 oz THICK

NET WT 12 LB (5.44kg)

MFG. BY: WOLVERINE PACKING CO., DETROIT,  
MI 48207

EST. 2574B Production Date: 10 22 24 (01)

Use by:  
11/14/24

Unknown, CABX – 2



(01) 0 0076176 73665 4 (11) 241022 (3201) 000120 (21) 0164839

KEEP REFRIGERATED 28 – 34°F

99738812

USDA PRIME  
GROUND BEEF PATTIES  
CHUCK

32 – 8 oz THICK

NET WT 16 LB (7.26kg)

MFG. BY: WOLVERINE PACKING CO., DETROIT,  
MI 48207

EST. 2574B Production Date: 10 22 24 (01)

Use by:  
11/14/24

Unknown, X – 2



(01) 0 0076176 74881 7 (11) 241022 (3201) 000160 (21) 0164840

KEEP REFRIGERATED 28 – 34°F

99738813

GROUND BEEF PATTIES  
2 PC HEREFORD CHUCKS

2:1 THICK

NET WT 16.00 LB (7.26kg)

MFG. BY: WOLVERINE PACKING CO., DETROIT,  
MI 48207

EST. 2574B Production Date: 10 22 24 (01)

Use by:  
11/14/24

Unknown, X – 2



(01) 0 0076176 83881 5 (11) 241022 (3201) 000160 (21) 0164841



KEEP REFRIGERATED 28 – 34°F  
USDA PRIME  
GROUND BEEF PATTIES  
PRIME CAB CHUCK

99738814

2/1 THICK

NET WT 16 LB (7.26kg)

MFG. BY: WOLVERINE PACKING CO., DETROIT  
MI 48207

EST. 2574B Production Date: 10 22 24 (01)

Use by:  
11/14/24

Unknown, CABX-2



(01) 0 0076176 73883 2 (11) 241022 (3201) 000160 (21) 0164842

KEEP REFRIGERATED 28 – 34°F

99738840

GROUND BEEF PATTIES  
CAB CHUCK

2/1 THICK

NET WT 16 LB (7.26kg)

MFG. BY: WOLVERINE PACKING CO., DETROIT  
MI 48207

EST. 2574B Production Date: 10 22 24 (01)

Use by:  
11/14/24

Unknown, CABX-2



(01) 0 0076176 73884 9 (11) 241022 (3201) 000160 (21) 0164843

KEEP REFRIGERATED 28 – 34°F

99738840

GROUND BEEF PATTIES  
CAB CHUCK

2/1 THICK

NET WT 16 LB (7.26kg)

MFG. BY: WOLVERINE PACKING CO., DETROIT  
MI 48207

EST. 2574B Production Date: 10 22 24 (01)

Use by:  
11/14/24

Unknown, CABX-2



(01) 0 0076176 73884 9 (11) 241022 (3201) 000160 (21) 0164844

KEEP REFRIGERATED 28 – 34°F

99738880

GROUND BEEF PATTIES  
ANGUS CHUCK

32 – 8 oz THICK



NET WT 16 LB (7.26kg)

MFG. BY: WOLVERINE PACKING CO., DETROIT, MI 48207

EST. 2574B Production Date: 10 22 24 (01)

Use by:  
11/14/24

Unknown, X-2



(01) 0 0076176 93888 1 (11) 241022 (3201) 000160 (21) 0164845

KEEP REFRIGERATED 28 – 34°F

99739910

GROUND BEEF

Bulk



NET WT 20 LB (9.07kg)

MFG. BY: WOLVERINE PACKING CO., DETROIT, MI 48207

EST. 2574B Production Date: 10 22 24 (01)

Use by:  
11/14/24

Unknown, X-2



(01) 0 0076176 73991 4 (11) 241022 (3201) 000200 (21) 0164846

KEEP REFRIGERATED 28 – 34°F

99739920

GROUND BEEF

Bulk



NET WT 20 LB (9.07kg)

MFG. BY: WOLVERINE PACKING CO., DETROIT, MI 48207

EST. 2574B Production Date: 10 22 24 (01)

Use by:  
11/14/24

Unknown, X-2



(01) 0 0076176 73992 1 (11) 241022 (3201) 000200 (21) 0164847



KEEP REFRIGERATED 28 – 34°F

99755120

GROUND BEEF PATTIES

3.5 oz

NET WT 14 LB (6.35kg)

MFG. BY: WOLVERINE PACKING CO., DETROIT, MI 48207

EST. 2574B Production Date: 10 22 24 (01)

Use by:  
11/14/24

Unknown, X-2



(01) 0 0076176 75516 7 (11) 241022 (3201) 000140 (21) 0164848

KEEP REFRIGERATED 28 – 34°F

99757814

USDA PRIME

GROUND BEEF PATTIES

PRIME CAB CHUCK

24 – 8 oz PUCK

NET WT 12 LB (5.44kg)

MFG. BY: WOLVERINE PACKING CO., DETROIT, MI 48207

EST. 2574B Production Date: 10 22 24 (01)

Use by:  
11/14/24

Unknown, CABX-2



(01) 0 0076176 75783 3 (11) 241022 (3201) 000120 (21) 0164849

KEEP REFRIGERATED 28 – 34°F

99757840

GROUND BEEF PATTIES

CAB CHUCK

24 – 8 oz PUCK

NET WT 12 LB (5.44kg)

MFG. BY: WOLVERINE PACKING CO., DETROIT, MI 48207

EST. 2574B Production Date: 10 22 24 (01)

Use by:  
11/14/24

Unknown, CABX-2



(01) 0 0076176 75784 0 (11) 241022 (3201) 000120 (21) 0164850

KEEP REFRIGERATED 28 – 34°F  
USDA PRIME  
GROUND BEEF PATTIES  
PRIME CAB CHUCK

99758814



48 – 8 oz PUCK VEMAG

NET WT 24 LB (10.89kg)  
MFG. BY: WOLVERINE PACKING CO., DETROIT MI 48207  
EST. 2574B Production Date: 10 22 24 (01)  
Use by:  
11/14/24



Unknown, PUB – 2R – 24

(01) 0 0076176 75886 1 (11) 241022 (3201) 000240 (21) 0164851

KEEP REFRIGERATED 28 – 34°F  
GROUND BEEF PATTIES  
ANGUS STEAKBURGER

99763100



3/1 THICK

NET WT 13.3 LB (6.03kg)  
MFG. BY: WOLVERINE PACKING CO., DETROIT MI 48207  
EST. 2574B Production Date: 10 22 24 (01)  
Use by:  
11/14/24



Unknown, X – 2

(01) 0 0076176 76310 0 (11) 241022 (3201) 000133 (21) 0164852

KEEP REFRIGERATED 28 – 34°F  
GROUND BEEF PATTIES

99763110



3/1 THICK

NET WT 13.3 LB (6.03kg)  
MFG. BY: WOLVERINE PACKING CO., DETROIT MI 48207  
EST. 2574B Production Date: 10 22 24 (01)  
Use by:  
11/14/24



Unknown, X – 2

(01) 0 0076176 56311 3 (11) 241022 (3201) 000133 (21) 0164853



KEEP REFRIGERATED 28 – 34°F

99763113

GROUND BEEF PATTIES  
HEREFORD CHUCK

3/1 THICK

NET WT 13.30 LB (6.03kg)

MFG. BY: WOLVERINE PACKING CO., DETROIT, MI 48207

EST. 2574B Production Date: 10 22 24 (01)

Use by:  
11/14/24

Unknown, X-2



(01) 0 0076176 96315 9 (11) 241022 (3201) 000133 (21) 0164854

KEEP REFRIGERATED 28 – 34°F

99763120

GROUND BEEF PATTIES

3/1 THICK

NET WT 13.3 LB (6.03kg)

MFG. BY: WOLVERINE PACKING CO., DETROIT, MI 48207

EST. 2574B Production Date: 10 22 24 (01)

Use by:  
11/14/24

Unknown, X-2



(01) 0 0076176 76312 4 (11) 241022 (3201) 000133 (21) 0164855

KEEP REFRIGERATED 28 – 34°F

99763140

GROUND BEEF PATTIES  
CAB CHUCK

3/1 THICK

NET WT 13.3 LB (6.03kg)

MFG. BY: WOLVERINE PACKING CO., DETROIT, MI 48207

EST. 2574B Production Date: 10 22 24 (01)

Use by:  
11/14/24

Unknown, CABX-2



(01) 0 0076176 76314 8 (11) 241022 (3201) 000133 (21) 0164856

KEEP REFRIGERATED 28 – 34°F

99763150

GROUND BEEF PATTIES  
CAB STEAKBURGER

3/1 THICK

NET WT 13.3 LB (6.03kg)

MFG. BY: WOLVERINE PACKING CO., DETROIT, MI 48207

EST. 2574B Production Date: 10 22 24 (01)

Use by:

11/14/24

Unknown, CABX-2



(01) 0 0076176 76315 5 (11) 241022 (3201) 000133 (21) 0164857

KEEP REFRIGERATED 28 – 34°F

99763180

GROUND BEEF PATTIES  
ANGUS CHUCK

3:1 THICK

NET WT 13.3 LB (6.03kg)

MFG. BY: WOLVERINE PACKING CO., DETROIT, MI 48207

EST. 2574B Production Date: 10 22 24 (01)

Use by:

11/14/24

Unknown, X-2



(01) 0 0076176 76318 6 (11) 241022 (3201) 000133 (21) 0164858

KEEP REFRIGERATED 28 – 34°F

99764100

GROUND BEEF PATTIES  
ANGUS STEAKBURGER

4:1 THICK

NET WT 14 LB (6.35kg)

MFG. BY: WOLVERINE PACKING CO., DETROIT, MI 48207

EST. 2574B Production Date: 10 22 24 (01)

Use by:

11/14/24

Unknown, X-2



(01) 0 0076176 76410 7 (11) 241022 (3201) 000140 (21) 0164859



KEEP REFRIGERATED 28 – 34°F

99764120

GROUND BEEF PATTIES

4/1 THICK

NET WT 14 LB (6.35kg)

MFG. BY: WOLVERINE PACKING CO., DETROIT, MI 48207

EST. 2574B Production Date: 10 22 24 (01)

Use by:  
11/14/24

Unknown, X-2



(01) 0 0076176 76412 1 (11) 241022 (3201) 000140 (21) 0164860

KEEP REFRIGERATED 28 – 34°F

99764250

STANDARD FILL

GROUND BEEF PATTIES

CAB STEAKBURGER

4/1 THICK

NET WT 14 LB (6.35kg)

MFG. BY: WOLVERINE PACKING CO., DETROIT, MI 48207

EST. 2574B Production Date: 10 22 24 (01)

Use by:  
11/14/24

Unknown, CABX-2



(01) 0 0076176 76476 3 (11) 241022 (3201) 000140 (21) 0164861

KEEP FROZEN

99781981

GROUND BEEF PATTIES  
ANGUS CHUCK

3.3 oz PUCK

NET WT 13.20 LB (5.99kg)

MFG. BY: WOLVERINE PACKING CO., DETROIT, MI 48207

EST. 2574B Production Date: 10 22 24 (01)

Unknown, X-2



(01) 0 0076176 78200 2 (11) 241022 (3201) 000132 (21) 0164862

KEEP REFRIGERATED 28 – 34°F

99782720

GROUND BEEF PATTIES



2.75 oz MINI

NET WT 16.5 LB (7.48kg)

MFG. BY: WOLVERINE PACKING CO., DETROIT, MI 48207

EST. 2574B Production Date: 10 22 24 (01)

Use by: 11/14/24

Unknown, X-2



(01) 0 0076176 78272 9 (11) 241022 (3201) 000165 (21) 0164863

KEEP REFRIGERATED 28 – 34°F

99788180

GROUND BEEF PATTIES  
ANGUS CHUCK



2 oz MINI

NET WT 16 LB (7.26kg)

MFG. BY: WOLVERINE PACKING CO., DETROIT, MI 48207

EST. 2574B Production Date: 10 22 24 (01)

Use by: 11/14/24

Unknown, X-2



(01) 0 0076176 78818 9 (11) 241022 (3201) 000160 (21) 0164864

KEEP REFRIGERATED 28 – 34°F

AA738800

GROUND BEEF PATTIES  
ANGUS STEAKBURGER



2/1 THICK

NET WT 16 LB (7.26kg)

MFG. BY: WOLVERINE PACKING CO., DETROIT, MI 48207

EST. 2574B Production Date: 10 22 24 (01)

Use by: 11/14/24

Unknown, X-2



(01) 0 0076176 74185 6 (11) 241022 (3201) 000160 (21) 0164865



KEEP REFRIGERATED 28 – 34°F  
GROUND BEEF PATTIES

**AE736110**

6/1

**NET WT 13.3 LB (6.03kg)**

MFG. BY: WOLVERINE PACKING CO., DETROIT, MI 48207

EST. 2574B Production Date: 10 22 24 (01)

Use by:  
11/14/24

Unknown, X-2



(01) 0 0076176 73656 2 (11) 241022 (3201) 000133 (21) 0164866

KEEP REFRIGERATED 28 – 34°F  
GROUND BEEF PATTIES

**AE738810**

2/1 THICK

**NET WT 16 LB (7.26kg)**

MFG. BY: WOLVERINE PACKING CO., DETROIT, MI 48207

EST. 2574B Production Date: 10 22 24 (01)

Use by:  
11/14/24

Unknown, X-2



(01) 0 0076176 74191 7 (11) 241022 (3201) 000160 (21) 0164867

KEEP REFRIGERATED 28 – 34°F  
GROUND BEEF PATTIES

**BB730610**

6 oz WIDE

**NET WT 15 LB (6.80kg)**

MFG. BY: WOLVERINE PACKING CO., DETROIT, MI 48207

EST. 2574B Production Date: 10 22 24 (01)

Use by:  
11/14/24

**BB730610**  
Unknown, W-2



**6z.**



(01) 0 0076176 73083 6 (11) 241022 (3201) 000150 (21) 0164868

KEEP REFRIGERATED 28 – 34°F  
GROUND BEEF PATTIES

**BB735110**

5/1 Round

NET WT 12.8 LB (5.81kg)

MFG. BY: WOLVERINE PACKING CO., DETROIT, MI 48207

EST. 2574B Production Date: 10 22 24 (01)

Use by:  
11/14/24

Unknown, W-2



(01) 0 0076176 73554 1 (11) 241022 (3201) 000128 (21) 0164869

KEEP REFRIGERATED 28 – 34°F  
GROUND BEEF PATTIES  
CAB STEAKBURGER

**BF730650**

6 oz WIDE

NET WT 15 LB (6.80kg)

MFG. BY: WOLVERINE PACKING CO., DETROIT, MI 48207

EST. 2574B Production Date: 10 22 24 (01)

Use by:  
11/14/24

Unknown, CABX-2



(01) 0 0076176 73488 9 (11) 241022 (3201) 000150 (21) 0164870

KEEP REFRIGERATED 28 – 34°F  
USDA PRIME  
GROUND BEEF PATTIES  
CHUCK

**BH730712**

7 oz THICK

NET WT 14 LB (6.35kg)

MFG. BY: WOLVERINE PACKING CO., DETROIT, MI 48207

EST. 2574B Production Date: 10 22 24 (01)

Use by:  
11/14/24

Unknown, X-2



(01) 0 0076176 73274 8 (11) 241022 (3201) 000140 (21) 0164871



KEEP REFRIGERATED 28 – 34°F

# BP736645

**GROUND BEEF PATTIES  
CAB STEAKBURGER**

**32 – 6 oz THICK**

**NET WT 12 LB (5.44kg)**

MFG. BY: WOLVERINE PACKING CO., DETROIT, MI 48207

EST. 2574B Production Date: 10 22 24 (01)

Use by:

**11/14/24**

Unknown, CABX-2



(01) 0 0076176 73685 2 (11) 241022 (3201) 000120 (21) 0164872

KEEP REFRIGERATED 28 – 34°F

# BT763125

**CUSTOM BLEND  
GROUND BEEF PATTIES  
CAB**

**3/1 THICK**

**NET WT 13.30 LB (6.03kg)**

MFG. BY: WOLVERINE PACKING CO., DETROIT, MI 48207

EST. 2574B Production Date: 10 22 24 (01)

Use by:

**11/14/24**

Unknown, CABX-2



# CB



(01) 0 0076176 76378 0 (11) 241022 (3201) 000133 (21) 0164873

KEEP REFRIGERATED 28 – 34°F

# BT764125

**CUSTOM BLEND  
GROUND BEEF PATTIES  
CAB**

**4/1 THICK**

**NET WT 14 LB (6.35kg)**

MFG. BY: WOLVERINE PACKING CO., DETROIT, MI 48207

EST. 2574B Production Date: 10 22 24 (01)

Use by:

**11/14/24**

Unknown, CABX-2



# CB



(01) 0 0076176 76512 8 (11) 241022 (3201) 000140 (21) 0164874

KEEP REFRIGERATED 28 – 34°F

**BX739920**

**GROUND BEEF**



**4/5 lb Bulk**

**NET WT 20 LB (9.07kg)**

MFG. BY: WOLVERINE PACKING CO., DETROIT MI 48207

EST. 2574B Production Date: 10 22 24 (01)

Use by:  
**11/14/24**

Unknown, X-2 Bulk



(01) 0 0076176 74176 4 (11) 241022 (3201) 000200 (21) 0164875

KEEP REFRIGERATED 28 – 34°F

**CB718315**

**CUSTOM BLEND**

**GROUND BEEF PATTIES**

**ANGUS CHUCK**



**CB**

**3.3 oz PUCK**

**NET WT 13.20 LB (5.99kg)**

MFG. BY: WOLVERINE PACKING CO., DETROIT MI 48207

EST. 2574B Production Date: 10 22 24 (01)

Use by:  
**11/14/24**

Unknown, X-2



(01) 0 0076176 71836 0 (11) 241022 (3201) 000132 (21) 0164876

KEEP REFRIGERATED 28 – 34°F

**CB718325**

**CUSTOM BLEND**

**GROUND BEEF PATTIES**

**CAB CHUCK**



**CB**

**3.3 oz PUCK**

**NET WT 13.20 LB (5.99kg)**

MFG. BY: WOLVERINE PACKING CO., DETROIT MI 48207

EST. 2574B Production Date: 10 22 24 (01)

Use by:  
**11/14/24**

Unknown, CABX-2



(01) 0 0076176 71834 6 (11) 241022 (3201) 000132 (21) 0164877



KEEP REFRIGERATED 28 – 34°F  
CUSTOM BLEND  
GROUND BEEF  
CAB CHUCK

**CB730025**



**CB**

**Bulk**

**NET WT 20 LB (9.07kg)**

MFG. BY: WOLVERINE PACKING CO., DETROIT, MI 48207

EST. 2574B Production Date: 10 22 24 (01)

Use by:  
**11/14/24**

Unknown, CABX-2



(01) 0 0076176 73034 8 (11) 241022 (3201) 000200 (21) 0164878

KEEP REFRIGERATED 28 – 34°F  
CUSTOM BLEND  
GROUND BEEF PATTIES  
ANGUS CHUCK

**CB730715**



**CB**

**7 oz THICK**

**NET WT 14 LB (6.35kg)**

MFG. BY: WOLVERINE PACKING CO., DETROIT, MI 48207

EST. 2574B Production Date: 10 22 24 (01)

Use by:  
**11/14/24**

Unknown, X-2



(01) 0 0076176 73108 6 (11) 241022 (3201) 000140 (21) 0164879

KEEP REFRIGERATED 28 – 34°F  
CUSTOM BLEND  
GROUND BEEF PATTIES  
CAB CHUCK

**CB730725**



**CB**

**7 oz THICK**

**NET WT 14 LB (6.35kg)**

MFG. BY: WOLVERINE PACKING CO., DETROIT, MI 48207

EST. 2574B Production Date: 10 22 24 (01)

Use by:  
**11/14/24**

Unknown, CABX-2



(01) 0 0076176 73106 2 (11) 241022 (3201) 000140 (21) 0164880

KEEP REFRIGERATED 28 – 34°F  
CUSTOM BLEND  
GROUND BEEF PATTIES  
CAB CHUCK

2:1 WIDE

NET WT 16 LB (7.26kg)

MFG. BY: WOLVERINE PACKING CO., DETROIT,  
MI 48207

EST. 2574B Production Date: 10 22 24 (01)

Use by:  
11/14/24

Unknown, CABX-2

CB732125



CB



(01) 0 0076176 73229 8 (11) 241022 (3201) 000160 (21) 0164881

KEEP REFRIGERATED 28 – 34°F  
CUSTOM BLEND  
GROUND BEEF PATTIES  
ANGUS CHUCK

32 – 6 oz THICK

NET WT 12 LB (5.44kg)

MFG. BY: WOLVERINE PACKING CO., DETROIT,  
MI 48207

EST. 2574B Production Date: 10 22 24 (01)

Use by:  
11/14/24

Unknown, X-2

CB736615



CB



(01) 0 0076176 73682 1 (11) 241022 (3201) 000120 (21) 0164882

KEEP REFRIGERATED 28 – 34°F  
CUSTOM BLEND  
GROUND BEEF PATTIES  
CAB CHUCK

32 – 6 oz THICK

NET WT 12 LB (5.44kg)

MFG. BY: WOLVERINE PACKING CO., DETROIT,  
MI 48207

EST. 2574B Production Date: 10 22 24 (01)

Use by:  
11/14/24

Unknown, CABX-2

CB736625



CB



(01) 0 0076176 73688 3 (11) 241022 (3201) 000120 (21) 0164883



KEEP REFRIGERATED 28 – 34°F  
CUSTOM BLEND  
GROUND BEEF PATTIES  
ANGUS CHUCK

**CB738815**

2:1 THICK

NET WT 16 LB (7.26kg)

MFG. BY: WOLVERINE PACKING CO., DETROIT  
MI 48207

EST. 2574B Production Date: 10 22 24 (01)

Use by:  
11/14/24

Unknown, X-2



**CB**



(01) 0 0076176 23881 3 (11) 241022 (3201) 000160 (21) 0164884

KEEP REFRIGERATED 28 – 34°F  
CUSTOM BLEND  
GROUND BEEF PATTIES  
CAB CHUCK

**CB738825**

8 oz THICK

NET WT 16 LB (7.26kg)

MFG. BY: WOLVERINE PACKING CO., DETROIT  
MI 48207

EST. 2574B Production Date: 10 22 24 (01)

Use by:  
11/14/24

Unknown, CABX-2



**CB**



(01) 0 0076176 73899 3 (11) 241022 (3201) 000160 (21) 0164885

KEEP REFRIGERATED 28 – 34°F  
CUSTOM BLEND  
GROUND BEEF PATTIES  
ANGUS CHUCK

**CB758815**

48 – 8 oz PUCK VEMAG

NET WT 24 LB (10.89kg)

MFG. BY: WOLVERINE PACKING CO., DETROIT  
MI 48207

EST. 2574B Production Date: 10 22 24 (01)

Use by:  
11/14/24

Unknown, PUB-2R-24



**CB**



(01) 0 0076176 75881 6 (11) 241022 (3201) 000240 (21) 0164886

KEEP REFRIGERATED 28 – 34°F  
CUSTOM BLEND  
GROUND BEEF PATTIES  
CAB CHUCK

48 – 8 oz PUCK VEMAG

NET WT 24 LB (10.89kg)

MFG. BY: WOLVERINE PACKING CO., DETROIT, MI 48207

EST. 2574B Production Date: 10 22 24 (01)

Use by:

11/14/24

Unknown, PUB – 2R – 24

**CB758825**



**CB**



(01) 0 0076176 75889 2 (11) 241022 (3201) 000240 (21) 0164887

KEEP REFRIGERATED 28 – 34°F  
CUSTOM BLEND  
GROUND BEEF PATTIES  
ANGUS CHUCK

4/1 THICK

NET WT 14 LB (6.35kg)

MFG. BY: WOLVERINE PACKING CO., DETROIT, MI 48207

EST. 2574B Production Date: 10 22 24 (01)

Use by:

11/14/24

Unknown, X – 2

**CB764115**



**CB**



(01) 0 0076176 76429 9 (11) 241022 (3201) 000140 (21) 0164888

KEEP REFRIGERATED 28 – 34°F  
CUSTOM BLEND  
GROUND BEEF PATTIES  
ANGUS CHUCK

60 – 6 oz PUCK VEMAG

NET WT 22.50 LB (10.21kg)

MFG. BY: WOLVERINE PACKING CO., DETROIT, MI 48207

EST. 2574B Production Date: 10 22 24 (01)

Use by:

11/14/24

Unknown, PUB – 2R – 24

**CB786615**



**CB**



(01) 0 0076176 78661 1 (11) 241022 (3201) 000225 (21) 0164889



**Nutrition Facts**Serving Size 1 patty (84g / 3oz)  
Servings per Container: 60**Amount per serving**

Calories 220 Calories from Fat 160

% Daily Value

Total Fat 17g 26%

Saturated Fat 7g 35%

Trans Fat 1g

Cholesterol 55mg 19%

Sodium 45mg 2%

Total Carbohydrate 0g 0%

Dietary Fiber 0g 0%

Sugars 0g

Protein 15g

Vitamin A 0% Vitamin C 0%

Calcium 0% Iron 8%

\*Percent Daily Values are based on a 2,000 calorie diet.

**KEEP REFRIGERATED 28-34°F****1855 Black Angus Ground Beef  
Steakburger  
3 oz Round****USDA Choice or Higher****NET WT. 11.25 LBS. Unknown DA751355**Production Date  
**10 22 24**Use by:  
**11/14/24**

EST. 2574B



(01) 0 0076176 75138 1 (11) 241022 (3202) 001125 (21) 0191336

MFG. BY: WOLVERINE PACKING CO., DETROIT, MI 48207

**Nutrition Facts**Serving Size 1 patty (148g / 5.30oz)  
Servings per Container: 40**Amount per serving**

Calories 890 Calories from Fat 270

% Daily Value

Total Fat 30g 46%

Saturated Fat 12g 61%

Trans Fat 2g

Cholesterol 100mg 34%

Sodium 85mg 3%

Total Carbohydrate 0g 0%

Dietary Fiber 0g 0%

Sugars 0g

Protein 27g

Vitamin A 0% Vitamin C 0%

Calcium 2% Iron 15%

\*Percent Daily Values are based on a 2,000 calorie diet.

**KEEP REFRIGERATED 28-34°F****1855 Black Angus Ground Beef  
Steakburger  
3/1 THICK****USDA Choice or Higher****NET WT. 13.3 LBS. Unknown DA763155**Production Date  
**10 22 24**Use by:  
**11/14/24**

EST. 2574B



MFG. BY: WOLVERINE PACKING CO., DETROIT, MI 48207 (01) 0 0076176 76547 0 (11) 241022 (3201) 000133 (21) 0104628

**KEEP REFRIGERATED 28 - 34°F****470206****GROUND BEEF PATTIES****7 oz THICK****NET WT 14 LB (6.35kg)**

MFG. BY: WOLVERINE PACKING CO., DETROIT, MI 48207

EST. 2574B Production Date: 10 22 24 (01)

Use by:  
**11/14/24****DC730720**

Unknown, DCX-2



(01) 0 0076176 73592 3 (11) 241022 (3201) 000140 (21) 0164890

KEEP REFRIGERATED 28 – 34°F

470214

GROUND BEEF PATTIES



2/1 WIDE

NET WT 16 LB (7.26kg)

MFG. BY: WOLVERINE PACKING CO., DETROIT MI 48207

EST. 2574B Production Date: 10 22 24 (01)

Use by: 11/14/24

DC732120  
Unknown, DCX-2



(01) 0 0076176 73590 9 (11) 241022 (3201) 000160 (21) 0164891

KEEP REFRIGERATED 28 – 34°F

470213

GROUND BEEF PATTIES



3/1 THICK

NET WT 13.3 LB (6.03kg)

MFG. BY: WOLVERINE PACKING CO., DETROIT MI 48207

EST. 2574B Production Date: 10 22 24 (01)

Use by: 11/14/24

DC763120  
Unknown, DCX-2



(01) 0 0076176 76553 1 (11) 241022 (3201) 000133 (21) 0164892

KEEP REFRIGERATED 28 – 34°F

470209

GROUND BEEF PATTIES



4/1 THICK

NET WT 14 LB (6.35kg)

MFG. BY: WOLVERINE PACKING CO., DETROIT MI 48207

EST. 2574B Production Date: 10 22 24 (01)

Use by: 11/14/24

DC764120  
Unknown, DCX-2



(01) 0 0076176 76551 7 (11) 241022 (3201) 000140 (21) 0164893



KEEP REFRIGERATED 28 – 34°F  
CUSTOM BLEND  
GROUND BEEF PATTIES  
CAB CHUCK

8 oz THICK

NET WT 16 LB (7.26kg)

MFG. BY: WOLVERINE PACKING CO., DETROIT, MI 48207

EST. 2574B Production Date: 10 22 24 (01)

Use by:

11/14/24

Unknown, CABX-2

DV738825



(01) 0 0076176 74150 4 (11) 241022 (3201) 000160 (21) 0164894

KEEP REFRIGERATED 28 – 34°F

GROUND BEEF PATTIES  
ANGUS STEAKBURGER

4:1 THICK

NET WT 14 LB (6.35kg)

MFG. BY: WOLVERINE PACKING CO., DETROIT, MI 48207

EST. 2574B Production Date: 10 22 24 (01)

Use by:

11/14/24

Unknown, X-2

FK764100



(01) 0 0076176 76514 2 (11) 241022 (3201) 000140 (21) 0164895

KEEP REFRIGERATED 28 – 34°F

CUSTOM BLEND  
GROUND BEEF PATTIES  
ANGUS CHUCK

2:1 THICK

NET WT 16 LB (7.26kg)

MFG. BY: WOLVERINE PACKING CO., DETROIT, MI 48207

EST. 2574B Production Date: 10 22 24 (01)

Use by:

11/14/24

Unknown, X-2

FN738815



CB



(01) 0 0076176 74187 0 (11) 241022 (3201) 000160 (21) 0164896

KEEP REFRIGERATED 28 – 34°F  
CUSTOM BLEND  
GROUND BEEF PATTIES  
ANGUS CHUCK

# FN764115

4/1 THICK

NET WT 14 LB (6.35kg)

MFG. BY: WOLVERINE PACKING CO., DETROIT MI 48207

EST. 2574B Production Date: 10 22 24 (01)

Use by:

11/14/24

Unknown, X-2



# CB



(01) 0 0076176 76564 7 (11) 241022 (3201) 000140 (21) 0164897

KEEP REFRIGERATED 28 – 34°F  
VEMAG  
GROUND BEEF  
CAB

# GR786654

60 – 6 oz PUCK

NET WT 22.50 LB (10.21kg)

MFG. BY: WOLVERINE PACKING CO., DETROIT MI 48207

EST. 2574B Production Date: 10 22 24 (01)

Use by:

11/14/24

Unknown, PUB-2R-24



**Wolverine**  
Packing Co.



(01) 0 0076176 78666 6 (11) 241022 (3201) 000225 (21) 0164898

KEEP REFRIGERATED 28 – 34°F  
GROUND BEEF PATTIES

# HB732120

32 – 8 oz WIDE

NET WT 16 LB (7.26kg)

MFG. BY: WOLVERINE PACKING CO., DETROIT MI 48207

EST. 2574B Production Date: 10 22 24 (01)

Use by:

11/14/24

Unknown, X-2



# 8z.



(01) 0 0076176 73234 2 (11) 241022 (3201) 000160 (21) 0164899



KEEP FROZEN

GROUND BEEF PATTIES

2 oz MINI Stack Pak

NET WT 16.00 LB (7.26kg)

MFG. BY: WOLVERINE PACKING CO., DETROIT MI 48207

EST. 2574B Production Date: 10 22 24 (01)

Unknown, X-2

HE788911



HERITAGE  
—restaurant brands—



(01) 0 0076176 78900 1 (11) 241022 (3201) 000160 (21) 0164900

KEEP REFRIGERATED 28 – 34°F

GROUND BEEF PATTIES  
HEREFORD CHUCK

2 oz MINI

NET WT 16.00 LB (7.26kg)

MFG. BY: WOLVERINE PACKING CO., DETROIT MI 48207

EST. 2574B Production Date: 10 22 24 (01)

Use by:

11/14/24

Unknown, X-2

HF788123



Wolverine  
Packing Co.



(01) 0 0076176 78848 6 (11) 241022 (3201) 000160 (21) 0164901

KEEP REFRIGERATED 28 – 34°F

GROUND BEEF PATTIES

7 oz THICK

NET WT 14 LB (6.35kg)

MFG. BY: WOLVERINE PACKING CO., DETROIT MI 48207

EST. 2574B Production Date: 10 22 24 (01)

Use by:

11/14/24

Unknown, X-2

HN730710



Wolverine  
Packing Co.



(01) 0 0076176 73604 3 (11) 241022 (3201) 000140 (21) 0164902

KEEP REFRIGERATED 28 – 34°F

**HY788110**

**GROUND BEEF PATTIES**

**2 oz MINI**

**NET WT 16 LB (7.26kg)**

MFG. BY: WOLVERINE PACKING CO., DETROIT, MI 48207

EST. 2574B Production Date: 10 22 24 (01)

Use by:

**11/14/24**

Unknown, X-2



(01) 0 0076176 78912 4 (11) 241022 (3201) 000160 (21) 0164903

KEEP REFRIGERATED 28 – 34°F

**2363212**

**GROUND BEEF PATTIES  
ANGUS CHUCK**

**2/1 WIDE**

**NET WT 16 LB (7.26kg)**

MFG. BY: WOLVERINE PACKING CO., DETROIT, MI 48207

EST. 2574B Production Date: 10 22 24 (01)

Use by:

**11/14/24**

**JA732180**

Unknown, X-2



(01) 0 0076176 73231 1 (11) 241022 (3201) 000160 (21) 0164904

KEEP REFRIGERATED 28 – 34°F

**JJ734100**

**GROUND BEEF PATTIES  
ANGUS STEAKBURGER**

**4 oz WIDE**

**NET WT 16 LB (7.26kg)**

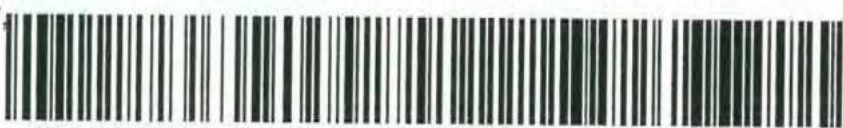
MFG. BY: WOLVERINE PACKING CO., DETROIT, MI 48207

EST. 2574B Production Date: 10 22 24 (01)

Use by:

**11/14/24**

Unknown, X-2



(01) 0 0076176 73575 6 (11) 241022 (3201) 000160 (21) 0164905



KEEP REFRIGERATED 28 – 34°F

# JK718373

## GROUND BEEF PATTIES STEAKBURGER

3.3 oz PUCK

NET WT 13.20 LB (5.99kg)

MFG. BY: WOLVERINE PACKING CO., DETROIT, MI 48207

EST. 2574B Production Date: 10 22 24 (01)

Use by:  
11/14/24

Unknown, W-2



(01) 0 0076176 71838 4 (11) 241022 (3201) 000132 (21) 0164906

KEEP REFRIGERATED 28 – 34°F

# JR764154

## GROUND BEEF PATTIES CAB

4/1 THICK

NET WT 14 LB (6.35kg)

MFG. BY: WOLVERINE PACKING CO., DETROIT, MI 48207

EST. 2574B Production Date: 10 22 24 (01)

Use by:  
11/14/24

Unknown, CABX-2



(01) 0 0076176 76480 0 (11) 241022 (3201) 000140 (21) 0164907

KEEP REFRIGERATED 28 – 34°F

# LI736654

## GROUND BEEF PATTIES CAB STEAKBURGER

6 oz THICK

NET WT 12 LB (5.44kg)

MFG. BY: WOLVERINE PACKING CO., DETROIT, MI 48207

EST. 2574B Production Date: 10 22 24 (01)

Use by:  
11/14/24

Unknown, CABX-2



(01) 0 0076176 73743 9 (11) 241022 (3201) 000120 (21) 0164908

KEEP REFRIGERATED 28 – 34°F

# MC739960

**GROUND BEEF**  
85% LEAN / 15% FAT

**Bulk**

**NET WT 20 LB (9.07kg)**

MFG. BY: WOLVERINE PACKING CO., DETROIT, MI 48207

EST. 2574B Production Date: 10 22 24 (01)

Use by:

**11/14/24**

Unknown, W-2



(01) 0 0076176 74032 3 (11) 241022 (3201) 000200 (21) 0164909

KEEP FROZEN

# ME788111

**GROUND BEEF PATTIES**

**2 oz MINI**

**NET WT 16 LB (7.26kg)**

MFG. BY: WOLVERINE PACKING CO., DETROIT, MI 48207

EST. 2574B Production Date: 10 22 24 (01)

Unknown, X-2 Bulk



(01) 0 0076176 78876 9 (11) 241022 (3201) 000160 (21) 0164910

KEEP REFRIGERATED 28 – 34°F

# MG764110

**GROUND BEEF PATTIES**

**4 oz THICK**

**NET WT 14 LB (6.35kg)**

MFG. BY: WOLVERINE PACKING CO., DETROIT, MI 48207

EST. 2574B Production Date: 10 22 24 (01)

Use by:

**11/14/24**

Unknown, X-2



(01) 0 0076176 76515 9 (11) 241022 (3201) 000140 (21) 0164911



KEEP REFRIGERATED 28 – 34°F

**OW763120**

**GROUND BEEF PATTIES**



**3/1 THICK**

**NET WT 13.3 LB (6.03kg)**

MFG. BY: WOLVERINE PACKING CO., DETROIT MI 48207

EST. 2574B Production Date: 10 22 24 (01)

Use by:

**11/14/24**

Unknown, X-2



(01) 0 0076176 76384 1 (11) 241022 (3201) 000133 (21) 0164912

KEEP REFRIGERATED 28 – 34°F

**RA730712**

USDA PRIME

**GROUND BEEF PATTIES**

**CHUCK**



**7 oz THICK**

**NET WT 14 LB (6.35kg)**

MFG. BY: WOLVERINE PACKING CO., DETROIT MI 48207

EST. 2574B Production Date: 10 22 24 (01)

Use by:

**11/14/24**

Unknown, X-2



(01) 0 0076176 73485 8 (11) 241022 (3201) 000140 (21) 0164913

KEEP REFRIGERATED 28 – 34°F

**RB730710**

**GROUND BEEF PATTIES**



**7 oz THICK**

**NET WT 14 LB (6.35kg)**

MFG. BY: WOLVERINE PACKING CO., DETROIT MI 48207

EST. 2574B Production Date: 10 22 24 (01)

Use by:

**11/14/24**

Unknown, X-2



(01) 0 0076176 73574 9 (11) 241022 (3201) 000140 (21) 0164914

KEEP REFRIGERATED 28 – 34°F

**RF738800**

**GROUND BEEF PATTIES  
ANGUS STEAKBURGER**



**2/1 THICK**

**NET WT 16 LB (7.26kg)**

MFG. BY: WOLVERINE PACKING CO., DETROIT, MI 48207

EST. 2574B Production Date: 10 22 24 (01)

Use by:  
**11/14/24**

Unknown, X-2



(01) 0 0076176 74148 1 (11) 241022 (3201) 000160 (21) 0164915

KEEP REFRIGERATED 28 – 34°F

**RU732120**

**GROUND BEEF PATTIES**



**2/1 WIDE**

**NET WT 16 LB (7.26kg)**

MFG. BY: WOLVERINE PACKING CO., DETROIT, MI 48207

EST. 2574B Production Date: 10 22 24 (01)

Use by:  
**11/14/24**

Unknown, X-2



(01) 0 0076176 73579 4 (11) 241022 (3201) 000160 (21) 0164916

KEEP REFRIGERATED 28 – 34°F

**RZ782710**

**GROUND BEEF PATTIES**



**2.75 oz PUCK**

**NET WT 16.5 LB (7.48kg)**

MFG. BY: WOLVERINE PACKING CO., DETROIT, MI 48207

EST. 2574B Production Date: 10 22 24 (01)

Use by:  
**11/14/24**

Unknown, X-2



(01) 0 0076176 78307 8 (11) 241022 (3201) 000165 (21) 0164917



KEEP REFRIGERATED 28 – 34°F

# SN738840

**GROUND BEEF PATTIES  
CAB CHUCK**

**2/1 THICK**

**NET WT 16 LB (7.26kg)**

MFG. BY: WOLVERINE PACKING CO., DETROIT  
MI 48207

EST. 2574B Production Date: 10 22 24 (01)

Use by:  
**11/14/24**

Unknown, CABX-2



(01) 0 0076176 74072 9 (11) 241022 (3201) 000160 (21) 0164918

KEEP FROZEN

# SP730711

**GROUND BEEF PATTIES**

**7 oz Round**

**NET WT 14 LB (6.35kg)**

MFG. BY: WOLVERINE PACKING CO., DETROIT  
MI 48207

EST. 2574B Production Date: 10 22 24 (01)

Unknown, X-2 Bulk



(01) 0 0076176 73558 9 (11) 241022 (3201) 000140 (21) 0164919

KEEP FROZEN

# SP739911

**GROUND BEEF**

**Bulk**

**NET WT 20 LB (9.07kg)**

MFG. BY: WOLVERINE PACKING CO., DETROIT  
MI 48207

EST. 2574B Production Date: 10 22 24 (01)

Unknown, X-2 Bulk



(01) 0 0076176 74170 2 (11) 241022 (3201) 000200 (21) 0164920

KEEP REFRIGERATED 28 – 34°F

**TE735150**

**GROUND BEEF PATTIES  
CAB**

**64 – 3.2 oz**

**NET WT 12.8 LB (5.81kg)**

MFG. BY: WOLVERINE PACKING CO., DETROIT  
MI 48207

EST. 2574B Production Date: 10 22 24 (01)

Use by:  
**11/14/24**

Unknown, CABX – 2



(01) 0 0076176 73545 9 (11) 241022 (3201) 000128 (21) 0164921

KEEP FROZEN

**TJ737921**

**GROUND BEEF PATTIES**

**32 – 7 oz THICK Stack Pak**

**NET WT 14.00 LB (6.35kg)**

MFG. BY: WOLVERINE PACKING CO., DETROIT  
MI 48207

EST. 2574B Production Date: 10 22 24 (01)

Unknown, X – 2



(01) 0 0076176 73798 9 (11) 241022 (3201) 000140 (21) 0164922

KEEP REFRIGERATED 28 – 34°F

**TL732110**

**GROUND BEEF PATTIES**

**8 oz WIDE**

**NET WT 16 LB (7.26kg)**

MFG. BY: WOLVERINE PACKING CO., DETROIT  
MI 48207

EST. 2574B Production Date: 10 22 24 (01)

Use by:  
**11/14/24**

Unknown, X – 2



(01) 0 0076176 73297 7 (11) 241022 (3201) 000160 (21) 0164923



KEEP REFRIGERATED 28-34°F

# TP756620

GROUND BEEF PATTIES

30-6 oz PUCK

NET WT 11.25 LB (5.10kg)

MFG. BY: WOLVERINE PACKING CO., DETROIT, MI 48207

EST. 2574B

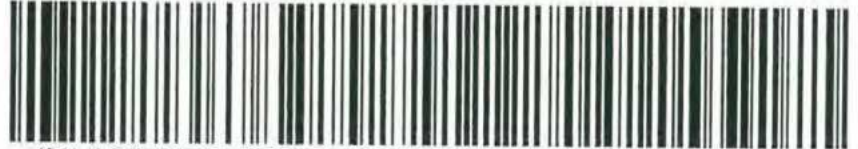
Packing Nos: 10 22 24 (01)

Use by:

11/14/24

X-2

Unknown



(01) 0 0076176 75662 1 (11) 241022 (3202) 001125 (21) 0125971

KEEP REFRIGERATED 28 – 34°F

# WL763154

GROUND BEEF PATTIES  
CAB STEAKBURGER

5.33 oz THICK

NET WT 13.3 LB (6.03kg)

MFG. BY: WOLVERINE PACKING CO., DETROIT MI 48207

EST. 2574B Production Date: 10 22 24 (01)

Use by:

11/14/24

Unknown, CABX-2



(01) 0 0076176 76385 8 (11) 241022 (3201) 000133 (21) 0164924

KEEP REFRIGERATED 28 – 34°F

# WL764154

GROUND BEEF PATTIES  
CAB STEAKBURGER

4 oz THICK

NET WT 14 LB (6.35kg)

MFG. BY: WOLVERINE PACKING CO., DETROIT MI 48207

EST. 2574B Production Date: 10 22 24 (01)

Use by:

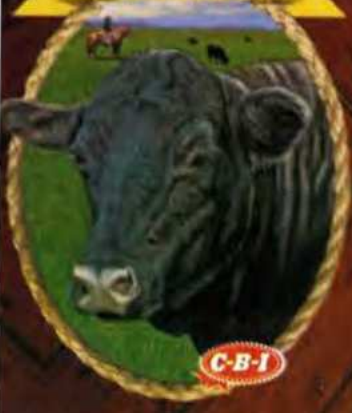
11/14/24

Unknown, CABX-2



(01) 0 0076176 76525 8 (11) 241022 (3201) 000140 (21) 0164925

Cheney Brothers, Inc.  
**PREMIUM BEEF**



**KEEP REFRIGERATED 28-34°F**

**GROUND BEEF PATTIES**

**204631**  
**32/6oz THICK**

EST. 2574B

Unknown  
W-2

Use by:

**11/14/24**

**62736610**

**NET WT 12 LB (5.44kg)**

Production Date:  
10 22 24 (01)

Packed For: Cheney  
Brothers, Inc., West  
Palm Beach, FL 33404



(01) 0 0076176 73661 6 (11) 241022 (3201) 000120 (21) 0195741



Cheney Brothers, Inc.  
**PREMIUM BEEF**



**KEEP REFRIGERATED 28-34°F**

**GROUND BEEF PATTIES**

**204632**  
**32/8oz THICK**

EST. 2574B

Unknown  
W-2

Use by:

**11/14/24**

**62738810**

**NET WT 16 LB (7.26kg)**

Production Date:  
10 22 24 (01)

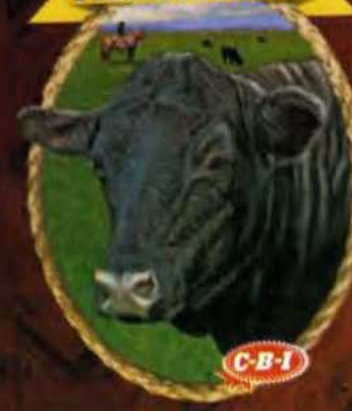
Packed For: Cheney  
Brothers, Inc., West  
Palm Beach, FL 33404



(01) 0 0076176 38810 5 (11) 241022 (3201) 000160 (21) 0195742



Cheney Brothers, Inc.  
**PREMIUM BEEF**



**KEEP REFRIGERATED 28-34°F**

**USDA PRIME**

**GROUND BEEF PATTIES  
CHUCK**

**204650**  
**32/8oz THICK**

EST. 2574B

Unknown  
W-2

Use by:

**11/14/24**

**62738812**

**NET WT 16 LB (7.26kg)**

Production Date:  
10 22 24 (01)

Packed For: Cheney  
Brothers, Inc., West  
Palm Beach, FL 33404



(01) 0 0076176 38812 9 (11) 241022 (3201) 000160 (21) 0195743





Cheney Brothers, Inc.  
**PREMIUM BEEF**



**KEEP REFRIGERATED 28-34°F**

**GROUND BEEF PATTIES**

**204629**  
**32/8oz THICK**

EST. 2574B

Unknown  
W-2

Use by:

**11/14/24**

**62738820**

**NET WT 16 LB (7.26kg)**

Production Date:  
10 22 24 (01)

Packed For: Cheney  
Brothers, Inc., West  
Palm Beach, FL 33404



(01) 0 0076176 83882 2 (11) 241022 (3201) 000160 (21) 0195744



Cheney Brothers, Inc.  
**PREMIUM BEEF**



**KEEP REFRIGERATED 28-34°F**

**GROUND BEEF PATTIES**

**204627**  
**40/5.33oz THICK**

EST. 2574B

Unknown  
W-2

Use by:

**11/14/24**

**62763120**

**NET WT 13.30 LB (6.03kg)**

Production Date:  
10 22 24 (01)

Packed For: Cheney  
Brothers, Inc., West  
Palm Beach, FL 33404



(01) 0 0076176 66312 7 (11) 241022 (3201) 000133 (21) 0195745



**KEEP REFRIGERATED 28 – 34°F**

**GROUND BEEF PATTIES**

**WN732110**

**2/1 WIDE**

**NET WT 16 LB (7.26kg)**

MFG. BY: WOLVERINE PACKING CO., DETROIT,  
MI 48207

EST. 2574B Production Date: 10 22 24 (01)

Use by:

**11/14/24**

Unknown, X-2



(01) 0 0076176 73494 0 (11) 241022 (3201) 000160 (21) 0164927







**Cheney's Angus Burgers**

**KEEP REFRIGERATED 28-34°F**  
CUSTOM BLEND  
**GROUND BEEF**  
**ANGUS CHUCK**

**204644**  
**4/5 lb Bulk**  
EST. 2574B

Unknown  
W-2

Use by:  
**11/14/24**

**62730015**



**NET WT 20 LB (9.07kg)**

Production Date:  
**10 22 24 (01)**

Packed For: Cheney  
Brothers, Inc., West  
Palm Beach, FL 33404



(01) 0 0076176 73025 6 (11) 241022 (3201) 000200 (21) 0195738



**Cheney's Angus Burgers**

**KEEP REFRIGERATED 28-34°F**  
CUSTOM BLEND  
**GROUND BEEF PATTIES**  
**ANGUS CHUCK**

**10013978**  
**40/5.33oz THICK**  
EST. 2574B

Unknown  
W-2

Use by:  
**11/14/24**

**62763115**



**NET WT 13.30 LB (6.03kg)**

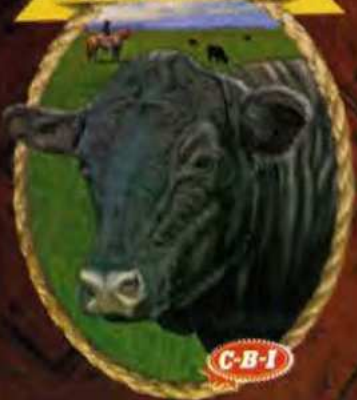
Production Date:  
**10 22 24 (01)**

Packed For: Cheney  
Brothers, Inc., West  
Palm Beach, FL 33404



(01) 0 0076176 76339 1 (11) 241022 (3201) 000133 (21) 0195739

**Cheney Brothers, Inc.**  
**PREMIUM BEEF**



**KEEP REFRIGERATED 28-34°F**  
USDA PRIME  
**GROUND BEEF**  
**CHUCK**

**204657**  
**4/5 lb Bulk**  
EST. 2574B

Unknown  
W-2

Use by:  
**11/14/24**

**62730012**



**NET WT 20 LB (9.07kg)**

Production Date:  
**10 22 24 (01)**

Packed For: Cheney  
Brothers, Inc., West  
Palm Beach, FL 33404



(01) 0 0076176 73041 6 (11) 241022 (3201) 000200 (21) 0195740



KEEP REFRIGERATED 28-34°F



4/1  
THICK

GROUND BEEF PATTIES

**DG764120**

KEEP REFRIGERATED 28-34°F

GROUND BEEF PATTIES

4/1 THICK

NET WT 14 LB (6.35kg)

MFG. BY: WOLVERINE PACKING CO., DETROIT, MI 48207

EST. 2574B

Production Date: 10 22 24

Use by:

11/14/24

X-2

LVQCHALALPRT



(01) 0 0076

KEEP REFRIGERATED 28-34°F



2/1  
WIDE

GROUND BEEF PATTIES  
ANGUS CHUCK

**2363212**

JA732180

KEEP REFRIGERATED 28-34°F

GROUND BEEF PATTIES  
ANGUS CHUCK

2/1 WIDE

NET WT 16 LB (7.26kg)

MFG. BY: WOLVERINE PACKING CO., DETROIT, MI 48207

EST. 2574B

Production Date: 10 22 24

Use by:

11/14/24

X-2

LVQCHALALPRT

**JA732180**



(01) 0 00761